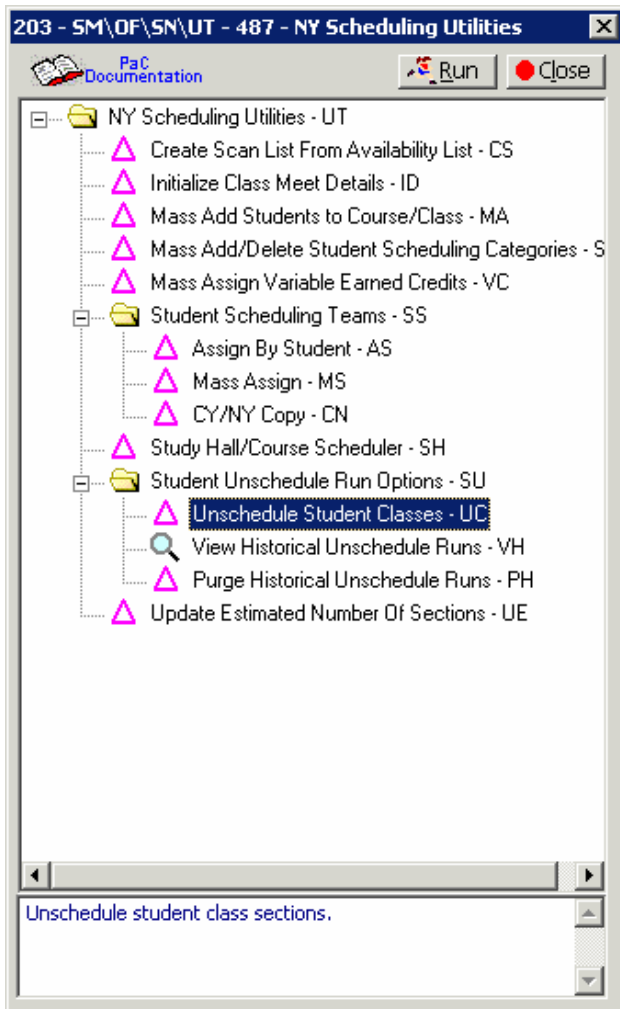


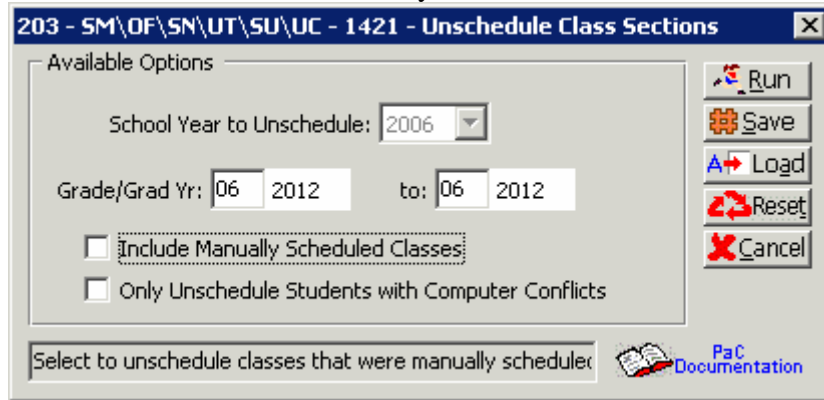
Unschedule Student Classes

To uncheduled requests and not uncheduled hand posted schedules:



Unschedule Student Classes

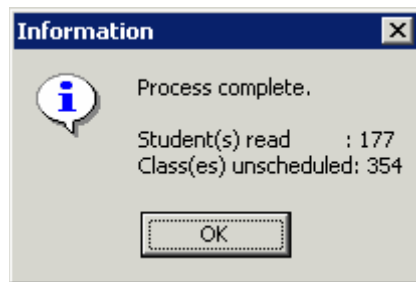
Do Not select "Include Manually Scheduled Classes"



The screenshot shows a dialog box titled "203 - SM\OF\SN\UT\SU\UC - 1421 - Unschedule Class Sections". It features a section for "Available Options" with the following controls:

- "School Year to Unschedule:" dropdown menu set to "2006".
- "Grade/Grad Yr:" input fields showing "06 2012" and "to: 06 2012".
- Two checkboxes: "Include Manually Scheduled Classes" (which is highlighted with a dashed border) and "Only Unschedule Students with Computer Conflicts".

On the right side, there is a vertical stack of buttons: "Run", "Save", "Load", "Reset", and "Cancel". At the bottom left, there is a checkbox labeled "Select to unschedule classes that were manually scheduled" and a "PaC Documentation" link with an icon.



The screenshot shows an "Information" dialog box with a blue header and a close button. It contains the following text:

Process complete.
Student(s) read : 177
Class(es) unscheduled: 354

At the bottom, there is an "OK" button.